

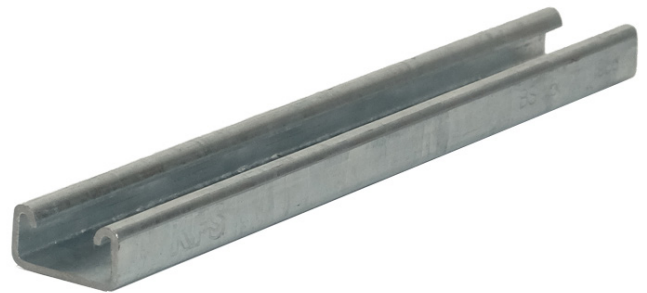
TECHNICAL DATA SHEET

KFS Shallow Channel - Plain

41 x 21mm Heavy Gauge

Standards:

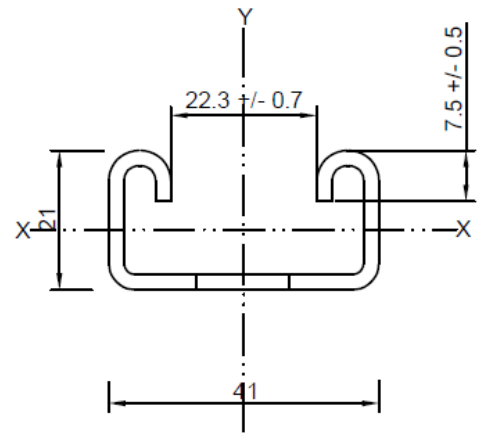
Manufactured in accordance with
BS 6946:1988



Material / Finishes:

Pre Galvanised (PG) Steel - BS EN 10346 2015,
S280 min. yield, Z275 NAC - BS EN 10346
Coating.

Hot Dipped Galvanised (HDG) - Plain Coil to
BS EN 10025 Pickled & Oiled min. yield
275 n/mm². Hot Dip Galvanised - to
BS EN ISO 1461: to a mean coating
thickness (average) of 55µm.



Gauge: 2.5mm

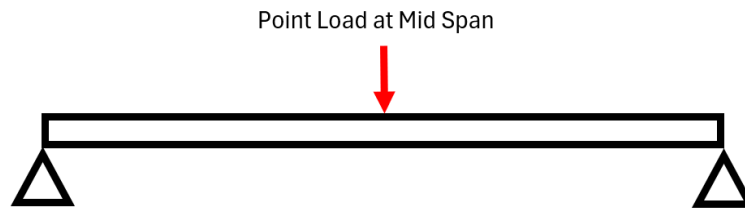
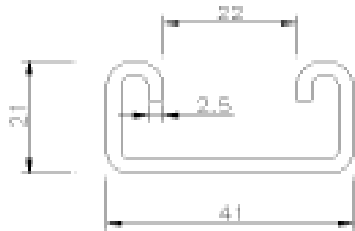
Weight: 1.7kg per metre

Stock Code	KFS Code	Gauge	Length	Finish	Bundle Qty
12001	KFS-021P	2.5mm	3m	PG	50
12002	KFS-021P	2.5mm	6m	PG	50
28001	KFS-121P	2.5mm	3m	HDG	50
28002	KFS-121P	2.5mm	6m	HDG	50

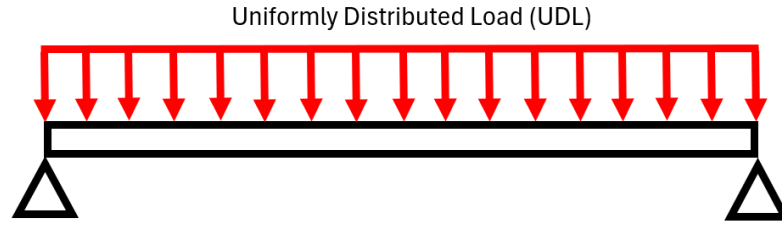
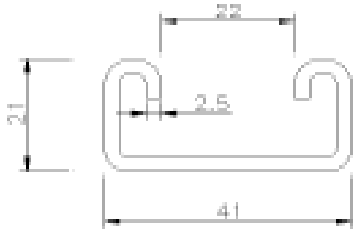
Section Properties				
Area cm ²	I _{xx} cm ⁴	r _{xx} cm	I _{yy} cm ⁴	Z _{yy} cm ³
2.2	1.29	0.77	5.41	2.6

TECHNICAL DATA SHEET

Loading Conditions: Point Load at Mid Span



Beam Span (mm)	Design Loads					
	Ultimate Loading		Limit Def. Span/200		Limit Def. Span/360	
	Central Point Load (kg)	Total Def. (mm)	Central Point Load (kg)	Total Def. (mm)	Central Point Load (kg)	Total Def. (mm)
250	290	0.4	-	-	-	-
500	165	1.6	-	-	140	1.4
750	110	3.6	-	-	62.5	2.1
1000	82	6.4	64	5.0	35	2.8
1250	65	10.0	40.5	6.3	22	3.5
1500	54	14.5	27	7.5	14.5	4.2
1750	46	19.8	19.5	8.8	9.9	4.9
2000	39.8	25.9	14.1	10.0	6.9	5.6
2250	35.1	33.0	10.5	11.3	4.8	6.3
2500	31.3	40.9	7.75	12.5	3.1	6.9
2750	28.2	49.9	5.7	13.8	1.85	7.6
3000	25.5	59.7	4.05	15.0	-	-
3250	23.2	70.5	2.75	16.3	-	-
3500	21.2	82.4	1.62	17.5	-	-
3750	19.5	95.4	-	-	-	-
4000	17.9	109.2	-	-	-	-
4250	16.5	124.2	-	-	-	-
4500	15.4	141.5	-	-	-	-
4750	14.2	158.7	-	-	-	-
5000	13.1	177.0	-	-	-	-
5250	12.3	198.8	-	-	-	-
5500	11.45	221.0	-	-	-	-
5750	10.66	244.8	-	-	-	-
6000	9.8	268.1	-	-	-	-

TECHNICAL DATA SHEET
Loading Conditions: Uniformly Distributed Load (UDL)


Beam Span (mm)	Ultimate Loading		Design Loads			
	Total Applied Load (kg)	Total Def. (mm)	Limit Def. Span/200 Applied UDL (kg)	Limit Def. Span/200 Total Def. (mm)	Limit Def. Span/360 Applied UDL (kg)	Limit Def. Span/360 Total Def. (mm)
250	600	0.5	-	-	-	-
500	325	2.0	-	-	240	1.5
750	221	4.5	185	3.8	100	2.1
1000	163	8.0	101	5.0	57	2.8
1250	129	12.4	65	6.3	35	3.5
1500	107	17.9	43.5	7.5	23.5	4.2
1750	91.5	24.4	31	8.8	16	4.9
2000	79.5	17.9	22.5	10.0	11.2	5.6
2250	69.8	24.4	16.8	11.3	7.7	6.3
2500	62.5	32.0	12.4	12.5	5	6.9
2750	55.9	60.8	9.1	13.8	3	7.6
3000	50.6	72.5	6.5	15.0	-	-
3250	46.1	85.4	4.4	16.3	-	-
3500	42	99.1	2.6	17.5	-	-
3750	38.6	114.3	-	-	-	-
4000	35.5	130.4	-	-	-	-
4250	32.7	147.6	-	-	-	-
4500	30.2	166.0	-	-	-	-
4750	27.9	185.5	-	-	-	-
5000	25.8	206.2	-	-	-	-
5250	24	229.0	-	-	-	-
5500	22.2	252.2	-	-	-	-
5750	20.5	276.4	-	-	-	-
6000	19	302.8	-	-	-	-

This Product Data Sheet applies only to the product and version identified. It is provided for general information only and does not form part of any contract, warranty or specification unless agreed in writing. Specifications may change without notice. Users must obtain the current version before selection, purchase or use. For previously supplied products contact Kernow Fixings on 01726 624600 or at sales@kernow-how.com.