

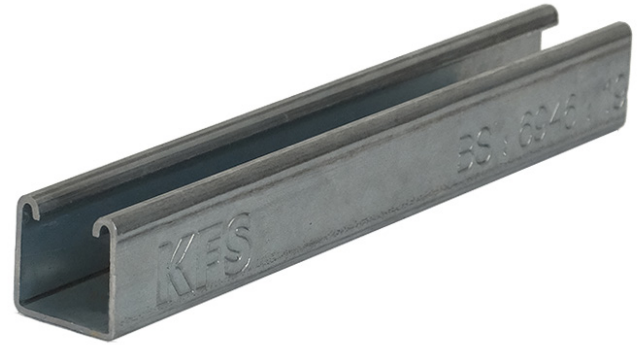
TECHNICAL DATA SHEET

KFS Deep Channel - Plain

41 x 41mm Heavy Gauge

Standards:

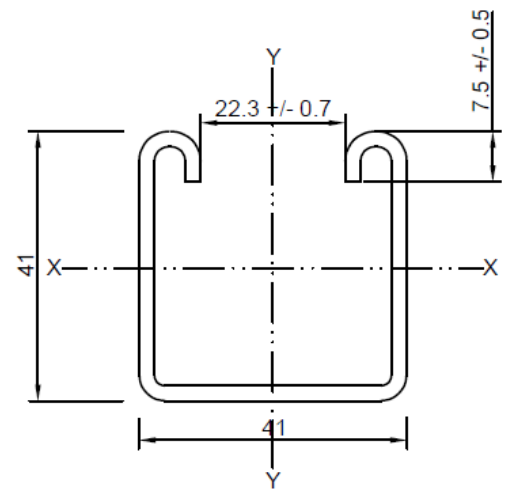
Manufactured in accordance with
BS 6946:1988



Material / Finishes:

Pre Galvanised (PG) Steel - BS EN 10346 2015.
S280 min. yield, Z275 NAC - BS EN 10346
Coating.

Hot Dipped Galvanised (HDG) - Plain Coil to
BS EN 10025 Pickled & Oiled min. yield
275 n/mm². Hot Dip Galvanised - to
BS EN ISO 1461: to a mean coating thickness
(average) of 55µm.



Gauge: 2.5mm

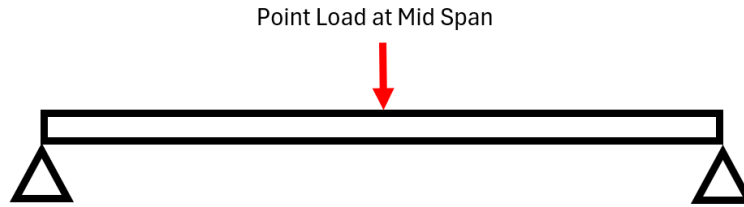
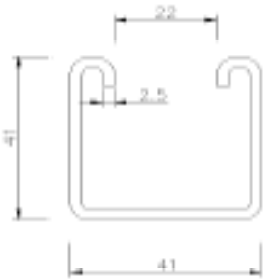
Weight: 2.61kg per metre

Stock Code	KFS Code	Gauge	Length	Finish	Bundle Qty
12007	KFS-041P	2.5mm	3m	PG	50
12008	KFS-041P	2.5mm	6m	PG	50
28007	KFS-141P	2.5mm	3m	HDG	50
28008	KFS-141P	2.5mm	6m	HDG	50

Section Properties				
Area cm ²	I _{xx} cm ⁴	r _{xx} cm	I _{yy} cm ⁴	Z _{yy} cm ³
3.3	7.1	1.46	9.3	4.5

TECHNICAL DATA SHEET

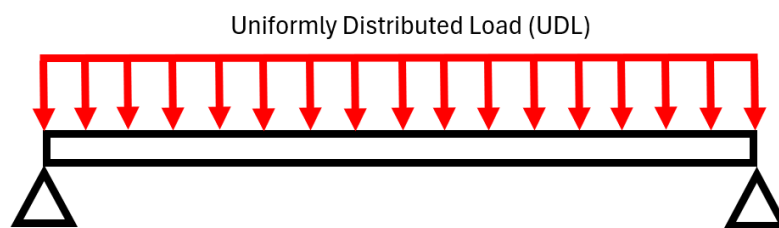
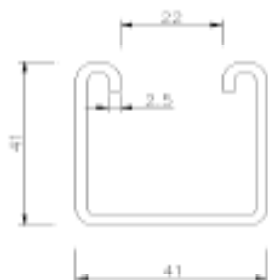
Loading Conditions: Point Load at Mid Span



Beam Span (mm)	Design Loads					
	Ultimate Loading		Limit Def. Span/200		Limit Def. Span/360	
	Central Point Load (kg)	Total Def. (mm)	Central Point Load (kg)	Total Def. (mm)	Central Point Load (kg)	Total Def. (mm)
250	900	0.2	-	-	-	-
500	450	0.8	-	-	-	-
750	300	1.8	-	-	-	-
1000	230	3.3	-	-	195	2.8
1250	185	5.1	-	-	125	3.5
1500	153	7.4	155	7.5	86	4.2
1750	130	10.0	114	8.8	62	4.9
2000	114	13.2	85.6	10.0	46.5	5.6
2250	101	16.7	67	11.3	35.6	6.3
2500	90.5	20.7	52.8	12.5	27.2	6.9
2750	81.5	25.1	42.8	13.8	21.5	7.6
3000	74.3	30.0	34.6	15.0	16.9	8.3
3250	68	35.3	28.5	16.3	13.3	9.0
3500	62.5	41.1	23.3	17.5	10.5	9.7
3750	57.9	47.4	19.3	18.8	7.9	10.4
4000	53.8	54.2	15.7	20.0	5.9	11.1
4250	50.1	61.4	12.9	21.3	4	11.8
4500	46.8	69.2	10.3	22.5	2.45	12.5
4750	43.7	77.4	8.1	23.8	-	-
5000	41.05	86.3	6.1	25.0	-	-
5250	38.5	95.6	4.4	26.3	-	-
5500	36.25	105.6	2.85	27.5	-	-
5750	34.2	116.2	-	-	-	-
6000	32.21	127.3	-	-	-	-

TECHNICAL DATA SHEET

Loading Conditions: Uniformly Distributed Load (UDL)



Beam Span (mm)	Ultimate Loading		Design Loads			
	Total Applied Load (kg)	Total Def. (mm)	Limit Def. Span/200 Applied UDL (kg)	Limit Def. Span/200 Total Def. (mm)	Limit Def. Span/360 Applied UDL (kg)	Limit Def. Span/360 Total Def. (mm)
250	1850	0.3	-	-	-	-
500	900	1.0	-	-	-	-
750	610	2.3	-	-	560	2.1
1000	460	4.1	-	-	320	2.8
1250	370	6.4	360	6.2	200	3.5
1500	308	9.2	250	7.5	139	4.2
1750	262	12.5	180	8.7	100	4.9
2000	225	16.2	137	10.0	75	5.6
2250	199	20.5	105	11.1	57	6.3
2500	180	25.6	85	12.5	44	6.9
2750	162.5	31.0	68	13.7	34.5	7.6
3000	148.5	37.0	55	14.9	27.3	8.3
3250	135.6	43.4	45.5	16.3	21.5	9.0
3500	125	50.5	37.5	17.5	16.6	9.7
3750	115.6	58.0	30.8	18.8	12.8	10.4
4000	107.3	66.1	25.2	20.0	9.3	11.1
4250	99.8	74.7	20.5	21.3	6.4	11.8
4500	93.2	83.9	16.3	22.4	3.9	12.5
4750	86.5	93.0	13	23.8	-	-
5000	81.8	104.0	9.8	25.0	-	-
5250	76.7	114.7	7.05	26.3	-	-
5500	72.1	126.2	4.5	27.4	-	-
5750	67.8	138.1	-	-	-	-
6000	64	150.9	-	-	-	-

This Product Data Sheet applies only to the product and version identified. It is provided for general information only and does not form part of any contract, warranty or specification unless agreed in writing. Specifications may change without notice. Users must obtain the current version before selection, purchase or use. For previously supplied products contact Kernow Fixings on 01726 624600 or at sales@kernow-how.com.