

**PRODUCT INFORMATION SHEET****Conduit Through Box - 25mm**

Order Code: 12957

**DESCRIPTION**

25mm Malleable Through Conduit Box

**FINISH**

Hot Dipped Galvanised

**MATERIAL**

Malleable Iron

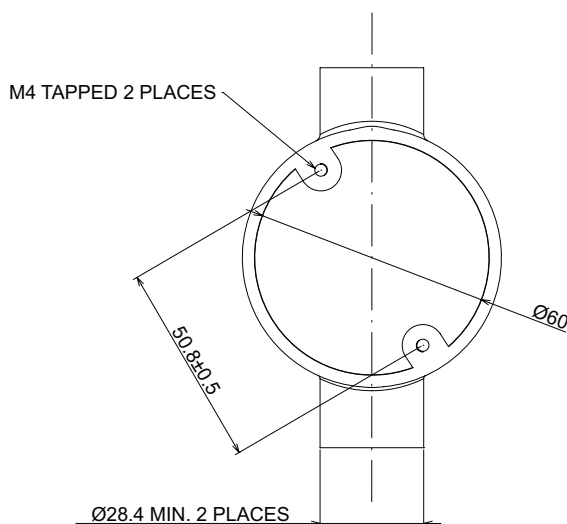
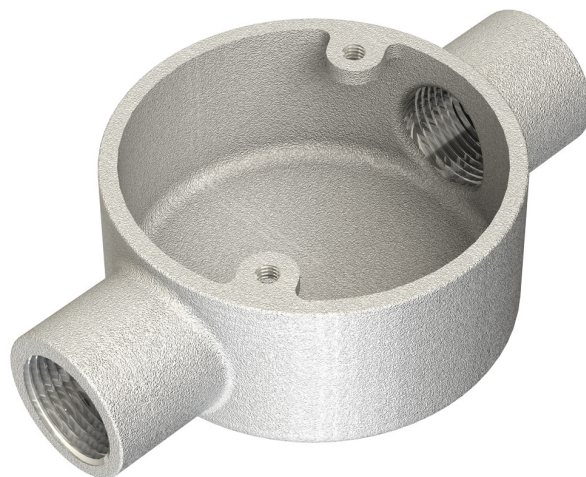
**PACKAGING**

Packed in qty 10

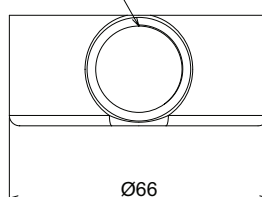
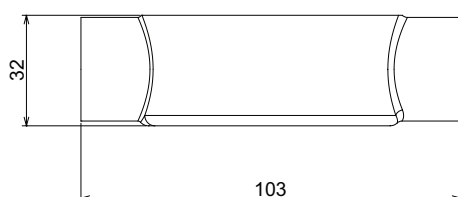
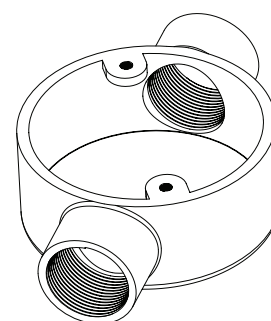
**ADDITIONAL NOTES**

Conforms to BS EN61386-1:2008

Compliant to LU Standard 1-085 (for use on surface &amp; sub-surface locations)



M25 CONDUIT THREAD 16mm DEEP 2 PLACES



For further product information, please contact one of the Kernow team on 01726 624600 or [sales@kernow-how.com](mailto:sales@kernow-how.com)